

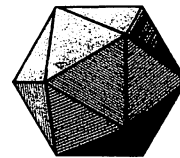
**It's a wonderful life: reflections  
on a career as a mathematician.**

Luise-Charlotte Kappe

State University of New York at Binghamton

menger@math.binghamton.edu

# The American Mathematical Monthly



Volume 101, Number 3 / MARCH 1994



Volumes 101, Number 3, March 1994, 201-304

AN OFFICIAL PUBLICATION OF THE MATHEMATICAL ASSOCIATION OF AMERICA



Melencolia I, 1514. Engraving. 9 1/2 x 7 3/8 in. Bequest of William P. Chapman, Jr., Class of 1895.



③

*“But-Oh! ye lords of ladies intellectual  
Inform us truly, have they not hen-pecked you all?”*

*Byron: Don Juan I, XXII.*

*...her mathematical studies... were carried farther than her mother's had been. I well remember accompanying her to see Mr. Babbage's wonderful analytic engine. While other visitors gazed at the working of the beautiful instrument with the sort of expression, and I dare say the sort of feeling that some savages are said to have shown on first seeing a looking-glass or hearing a gun - if indeed, they had as strong an idea of its marvelousness - Miss Byron, young as she was, understood its working, and saw the great beauty of the invention."*

*"But I feel bound to tell you that the power of thinking on these matters which Lady L. has always shown from the beginning of my correspondence with her, has been something... utterly out of the common way for a beginner, man or woman....*

*Had any young beginner, about to go to Cambridge, shown the same power, I should have prophesized first that his aptitude at grasping the strong points and the real difficulties of first principles would have very much lowered his chance of being a senior wrangler; secondly that they would have certainly made him an original mathematical investigator, perhaps of first rate eminence.*

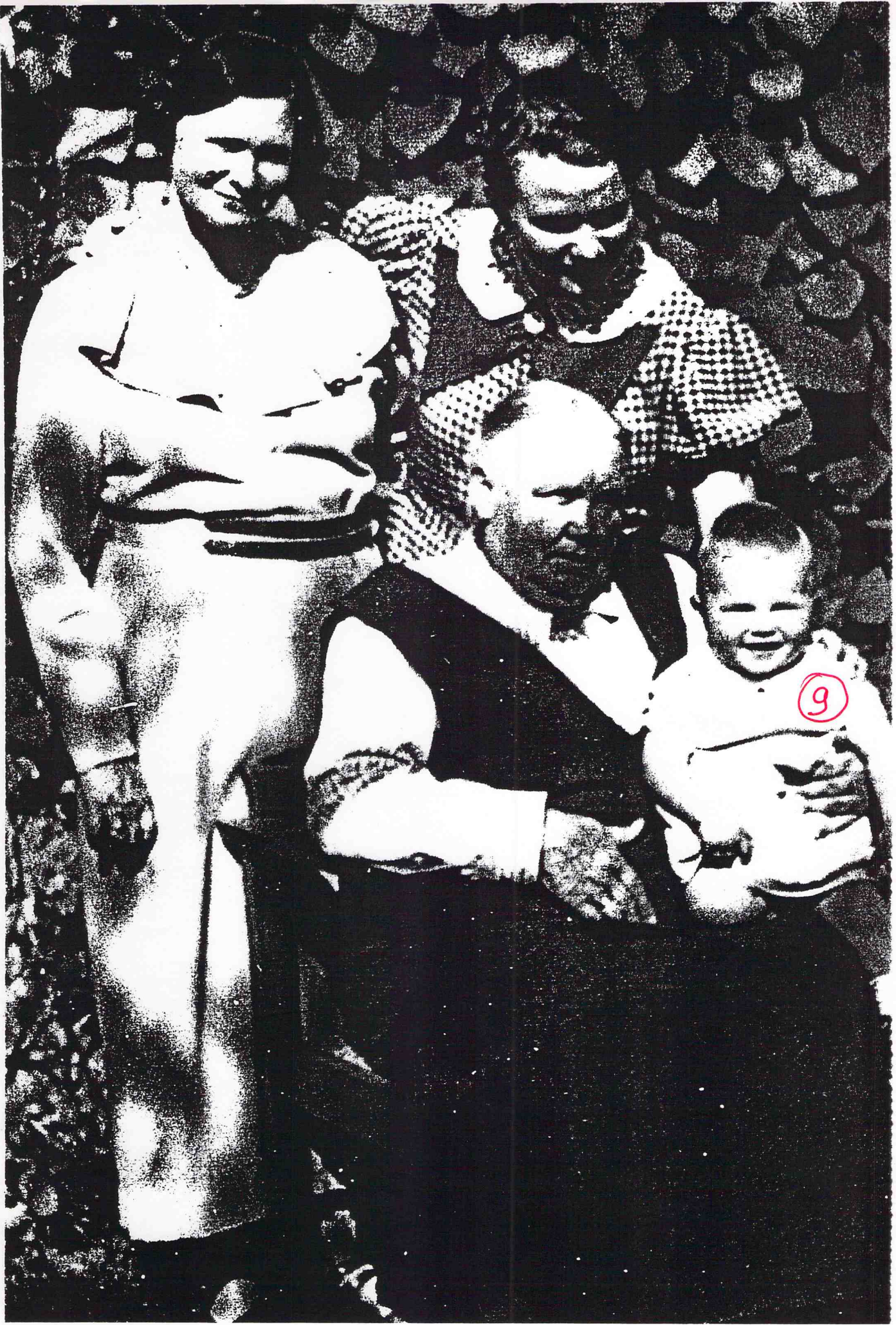


Sofya Kovalevskaya with her daughter Sonya



## S. V. KOVALEVSKAYA: CURRICULUM VITAE

- 1850 on January 3(15), born Sofya Vasilievna Kryukovskaya, since 1856 Korvin-Krukovskaya.
- 1853-1858 lived in Kaluga with parents.
- 1858 the family moved to Palibino, now in Pskov region.
- 1868 in spring, met Vladimir O. Kovalevsky.
- 1868 on September 15 (27), married to Vladimir O. Kovalevsky and left with him for Petersburg to study science.
- 1869 in April, left for Heidelberg.
- 1870 in October, moved to Berlin and started lessons with Weierstrass.
- 1874 in July, Sofya Kovalevskaya was granted the degree of Doctor of Philosophy by Göttingen University.
- 1878 on October 5 (17), her daughter was born.
- 1879 on December 28 (January 9, 1880), made a presentation at the VI-th Congress of Russian Natural Scientists and Physicians in Petersburg, the topic being "On the Reduction of Abelian Integrals of the 3rd Rank to the Elliptic Ones."
- 1881 on March 17 (29), elected to membership in the Moscow Mathematical Society.
- 1882 on July 24, elected to membership in the Paris Mathematical Society.
- 1883 on April 15 (27), died Vladimir O. Kovalevsky.
- 1883 on August 22 (September 4), reported to the VII-th Congress of Russian Natural Scientists and Physicians "On the Refraction of Light in a Crystalline Medium".
- 1883 on November 18, Sofya Kovalevskaya arrived in Stockholm.
- 1884 on February 11, gave the first lecture at Stockholm University.
- 1884 appointed Professor extraordinary of Stockholm University.
- 1888 on December 24, awarded the Prix Bordin by the Paris Academy of Sciences for her work "On the Rotation of a Rigid Body about a Fixed Point."
- 1889 on November 7 (19), elected Corresponding Member of the Petersburg Academy of Sciences at a session of the Physico-mathematical Section; the election approved by the general session of the Academy of Sciences on December 2 (14).
- 1889 awarded with the prize of Stockholm Academy of Sciences for her second memoir on the study of rotation of a rigid body "On a property of a system..."
- 1889 appointed Professor of Stockholm University for life (*à vie*).
- 1891 on February 10, Sofya Vasilievna Kovalevskaya died.





*Köthe, Emmy Noether, and Artin, in front of the Mathematical Institute, Göttingen.*



E · N

1882 - 1935

Erna Thie nee Sandow 1882-1968

Emmy Noether, 1882-1935

Ruth Moufang, 1905-1977

Hanna Neumann, 1914-1971

Bernhard Neumann, 1909-2003





14

## Bibliography

- [1] Auguste Dick “Emmy Noether, 1882-1935” Birckhäuser Verlag Basel, 1981.
- [2] Bärbel Kern, Horst Kern, “Madame Doctorin Schlözer”, C.H. Beck Verlag, München, 1990.
- [3] Pelageya Kochina, “Love and Mathematics: Sofya Kovalevskaya”, Mir Publishers, Moscow, 1985.
- [4] B.H. Neumann, “Byron’s daughter”, The Mathematical Gazette, 62 (1973), 94-97.
- [5] Encyclopedia Britannica.